

PRELIMINARY TDS ELECTRA – THE STATIC DISSIPATIVE VISCOSE FIBRE

Our static dissipative viscose fibre maintains the typical properties of all viscose fibres – for example its high absorbency – as the electrically conductive additives are incorporated into the black fibre's core.

ELECTRA is still in development. The aim is to connect the electrical conductivity with wearing comfort and washability in textile fibres. At the same time the new fibre should be more favourable as conventional metal or metal-coated fibres.

Application:

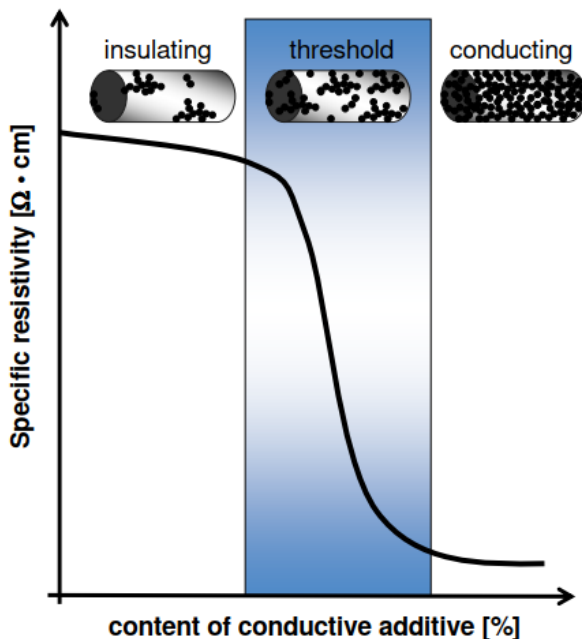
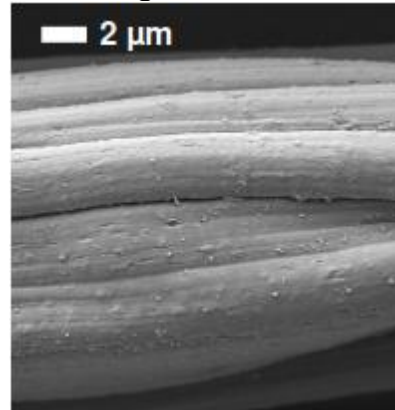
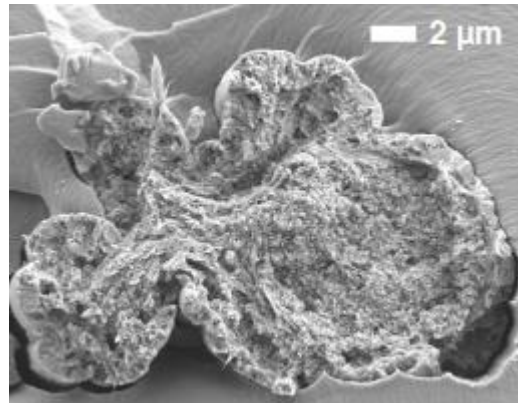
ELECTRA can be used in workwear to protect against static discharges and for the protection of electronic components and personnel. When used in moisture detection, for example in patient care end uses, it offers benefits in sensor systems as a result of its high sensitivity. Other Smart Textile Applications such as heating units or electronic sensors in combination with textile elements are currently developing.

Processing:

Pilot line samples of **ELECTRA** are available on request.

Performance:

Percolation Threshold


REM image of ELECTRA

Cross-Section of ELECTRA

Availability

Decitex	Cutting length (mm)
3,3 dtex	40

Other cutting lengths are available on request.
Other Titers are currently in development.

Properties / Availability

Fibre property		
Tenacity	cN / tex	8
Elongation at break	%	24
Specific Resistance	$\Omega^* \text{cm}$	500

Electra is a development product.
Fibre properties may vary.

For more information about our products please email to: sales@kelheim-fibres.com or call Germany +49 9441 99-519. Please visit also our website: www.kelheim-fibres.com

07/2018