

BRAMANTE – HOLLOW VISCOSE FIBRE

BRAMANTE is a segmented hollow viscose fibre which is collapsed in the dry state and swells when wetted.

BRAMANTE has an outstanding water absorption and retention capacity. Even under pressure, re-wetting is minimized as the water is securely enclosed in the fibre cavities.

BRAMANTE is ideal for all applications which require high absorbency, e.g. for hygiene and medical applications as well as for absorbent textiles.

Applications:

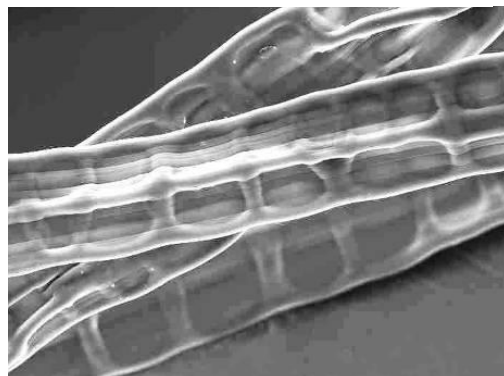
BRAMANTE can be used in 100% or in blends with other fibres, such as viscose, cotton or synthetics for the production of functional, moisture absorbent and regulating textiles and nonwovens, such as:

- Terry towels
- Wound dressings
- Incontinence products
- Absorbent pads
- Wipes for household and personal care (wet / dry)

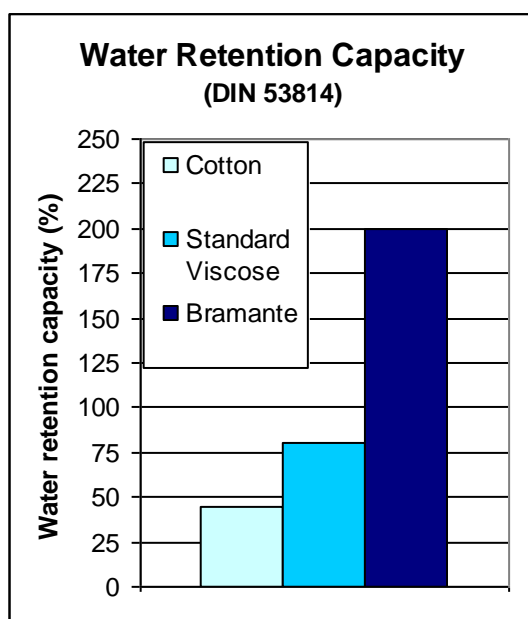
Processing

BRAMANTE can be processed on all common textile, nonwoven and wetlaid technologies

SEM image of BRAMANTE



Cross-Section of wet BRAMANTE fibre



Availability

Decitex	Cutting length (mm)
2,1	40
3,3	40 / 60

Other dtex / cutting lengths are available on request.

Property Profile

Fibre property	Unit	BRAMANTE
Tenacity	cN / tex	15 – 18
Elongation at break	%	20 – 25
Water retention	%	~ 200
Lustre		Semi-Matt

For more information about our products please email to: sales@kelheim-fibres.com or call Germany +49 9441 99-519. Please visit also our website www.kelheim-fibres.com.

07/2018