

NEW FUNCTIONAL VISCOSE FIBRES

Bramante – hollow viscose fibre

Bramante is a segmented hollow viscose fibre which is collapsed in the dry state and swells when wetted. Bramante has an outstanding water absorption and retention capacity. Even under pressure, re-wetting is minimized as the water is securely enclosed in the fibre cavities.

Bramante is ideal for all applications which require high absorbency, e.g. for hygiene and medical applications as well as for absorbent textiles.

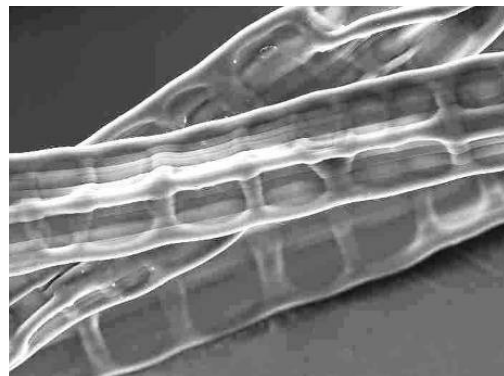
Applications:

Bramante can be used in 100% or in blends with other fibres, such as viscose, cotton or synthetics for the production of functional, moisture absorbent and regulating textiles and nonwovens, such as:

- Terry towels
- Wound dressings
- Incontinence products
- Absorbent pads
- Wipes for household and personal care (wet / dry)

Processing

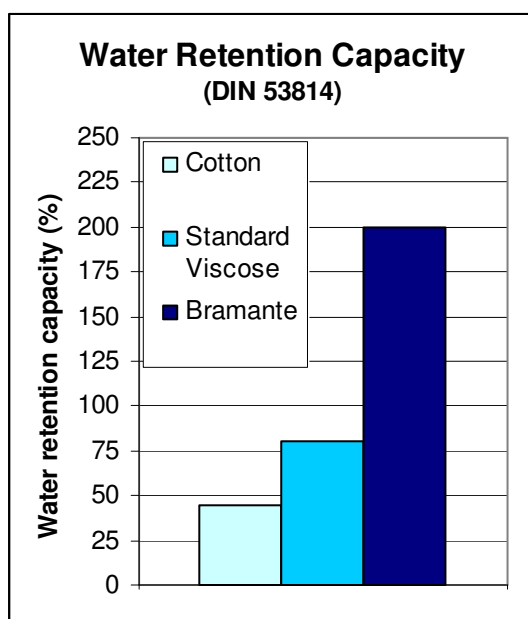
Bramante can be processed on all common textile, nonwoven and wetlaid technologies



SEM image of Bramante



Cross-section of wet Bramante fibre



Availability:

Decitex	Cut length (mm)	
2.1	40	Staple
3.3	40, 60	Staple

Other dtex / staple lengths are available on request.

Property Profile:

Fibre property		
Tenacity	cN / tex	15 – 18
Elongation at break	%	20 – 25
Water retention	%	~ 200
Lustre		Semi-Matt

For more information about our products please email to: functionalfibres@kelheim-fibres.com or call Germany +49-9441-99219. Please visit also our website www.kelheim-fibres.com . 08/2014

The above data are for the purpose of informing about our products and their applications and are based on current knowledge. They have hence not the meaning to guarantee certain properties or suitability for special applications. Danufil Trademarks and Patents are property of KELHEIM FIBRES GmbH Germany.